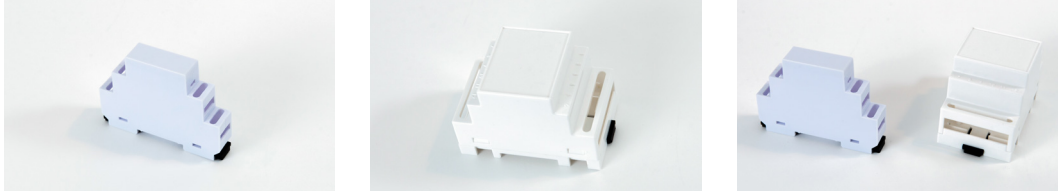


DWCW(x)-52.5-300 and DMSW(x)-17.5 enclosures



Two new enclosure additions to our Electronic Packaging series. Our 17.5mm and our 52.5mm enclosures. Protect your terminal blocks, relays, timers, or other devices with customized enclosures. We can easily customize other enclosure designs, add holes, change the shape, offer different colors (denoted in the part # scheme above by the "x" – in our examples here, they are in "white") to protect your internal components from dust or splashing of liquid.

CON-421963 relay socket



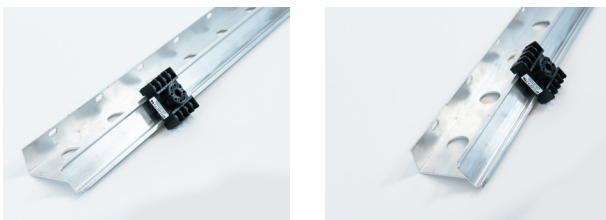
We took our standard 8 pin CM Series relay socket and changed the "body" of it slightly with the mounting holes being more of a part of the entire body rather than a separate "tabbed" mount. In addition, the 3 extra blocked off cavities gives us the ability to quickly offer this in an 11 pin version.

MC00003 toggle switch connector



New 6 pin toggle switch connector. We have added to our switch connector offering (see our CCH rocker switch connector) with this new connector. You can plug a .250" blade toggle switch into this connector. If the toggle switch needs replaced, you can easily unplug it and replace with a new switch.

C-108-APM and C-108-2APM angled DIN Rail



Our new 35mm angled DIN Rail, 7.5mm high, offers flexibility in how you mount devices within your panel. The one piece rail elevates the rail or if it is mounted high, brings it closer to you to allow you easier access to any devices which are mounted on it. It can also give you the ability to utilize more space within your control panel. The one piece design eliminates the need for purchasing separate angled brackets to mount flat rail.

Custom Connector has the design and engineering capabilities to design, modify, and manufacture products. If you have a need, give us a call!

**High Quality Manufactured Products, Innovation, Technical Expertise,
Timely Deliveries, & Excellent Customer Service**

American Made Products!